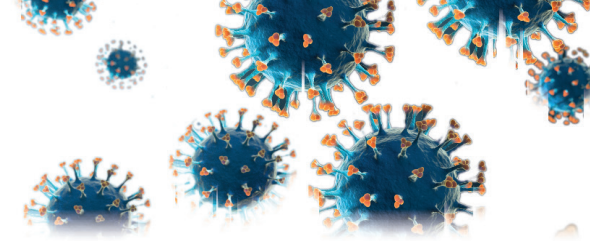


PRESS RELEASE



LESOTHO POSTBANK'S PERSPECTIVE ON: COVID-19

Lesotho PostBank takes cognisance of the prevailing virus outbreak; COVID -19 around the world at large and intends to do its part in putting preparedness measures in place for its employees, customers and other stakeholders. To this end, the Bank aligns itself with guidance given by the Ministry of Health, the Government of Lesotho and the World Health Organisation.

The Bank is committed to complying with guidelines provided by the World Health Organisation, local health bodies and the Ministry of Health. The health and well-being of our staff and customers is important; thus we adopt the precautions to protect all of you.

For convenience, we urge our customers to use digital channels to transact to avoid cash handling and potential large crowds in close proximity in branches. We will remain at your service, however, we recommend use of digital channels as follows:

- **Internet banking**
- **Mobile banking**
- **Merchants / Agents (POS) and**
- **Khetsi**

Although COVID -19 has posed enormous challenges to business and life in general, we believe that working together, and practising all the prescribed ways including prayer will see us through this pandemic victoriously. Your health is our priority.

By Lesotho PostBank Management.

POLELO EA LESOTHO POSTBANK MALEBANA LE LEFU LA COVID-19:

Lesotho PostBank ke banka ea Basotho e le 'ngoe feela ka har'a naha. Re hlokometse litaba tsa koluoa e teng lefat'seng ka kakaretso ea lefu la corona (coronavirus kapa COVID - 19).

Re elellisoa bareki ba rona hore Lesotho PostBank e ikamahanya le tsela eo lefat'se le Muso oa Lesotho li sebetsang ka eona ho qoba le ho fokotsa sekahla sa t'soatso ea lefu lena. Le tla eelloa tsireletso matsohong (liatlana) le lifahlehong (ho koahela linko le molomo) tsa basebeletsi ba rona.

Re khothaletsa batho bohle ho ithlalomela ka nako tsohle ka tsela e boletsoeng; bohloeki, ho qoba hoba hara sechaba se sengata, ho sebelisa liatlana le ho koahela linko, le tse ling tse boletsoeng.

Re le khothaletsa ho sebelisa lit'sebeletso tse latelang bakeng sa ho bebofatsa bophelo ba lona;

- **Mobile banking**
- **Internet banking**
- **Mechini e swापang (POS)**
- **Khetsi**

Basotho ba batle, rea lerata le ho letsotella. Ho ipaballa ho molemo bakeng sa bophelo bo botle. Ntoa ena re tla e hlola ha re ela hloko lipallo tse fanoeng le ho t'sepa Morena Molimo oa rona thapelong.

Bookameli ba Lesotho PostBank

INTERNET BANKING

MOBILE MAKING

MERCHANTS / AGENTS (POS)

KHETSI



@officiallesothopostbank



Lesothopostbank



@lesothopostbank



www.lpb.co.ls

Toll Free Number: 80099920